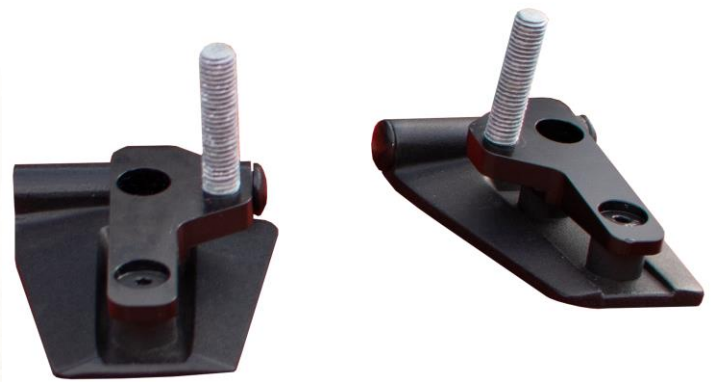


INSTALLATION INSTRUCTIONS

PART No.

FB31317

Jeep® 2007-Current JK/JL Wrangler & JT Gladiator
Hood Mounted Hi-Lift Jack Mount



*Hood Hinge Not Included

REQUIRED TOOLS

- T45 Torx Bit
- 5mm Allen Wrench
- Help of a Friend

KIT CONTAINS

- Hood Hinge Bracket (Left & Right)
- Plastic Knob
- M12 Washer
- M12 Lock Washer
- M12 Stud
- M8 Counter Sunk Bolt
- M8 Spacer

QTY

- 1ea
- 2
- 2
- 2
- 2
- 4
- 4

INSTALLATION INSTRUCTIONS

PART No.

FB31317

**Jeep® 2007-Current JK/JL Wrangler & JT Gladiator
Hood Mounted Hi-Lift Jack Mount**

1) PREPARE YOUR VEHICLE

Remove any aftermarket accessories that would get in the way of your hood hinges, and anything within the space of where your jack would rest.

While working on your hinges, only install the brackets one side at a time to retain the hood/hinge alignment.

2) PREPARE THE BRACKETS

The proper placement of each bracket is indicated by the location of the threaded bolt hole. With the indented holes facing up, each threaded hole should be closer to the center of the vehicle as shown below.



Begin screwing in the included studs into each bracket until it is flush on the underside. We recommend you use a threadlocker on each stud. Wait 10min for the gel to dry before installing your jack.



3) INSTALL THE BRACKETS

With a T45 Torx bit, remove the two bolts from one of the hinges at a time.



With the respective bracket and two of the included bolts and spacers, place the bracket into place as shown. Once level, secure it to the vehicle with a 5mm Allen wrench.



Repeat on the opposite side.

4) INSTALL YOUR JACK

Decide which holes in your jack rail will be used for mounting, and adjust it accordingly.

With the help of a friend, lower the jack onto the mount, and secure it to the studs with the included flat washers, lock washers, and knobs.

5) ENJOY YOUR NEW HI-LIFT JACK MOUNT